

**Faith, Divine
& the
Supernatural**

Carl Dreyer's
Vampyr (1932)







My soul is free.



Ingmar Bergman's
Wild Strawberries
(1957)



Bless, O Lord,
this food we eat. Amen.



Ah, when creation shows
so much beauty.



At night he is not there —”




Don't even try it.
Watch yourself.

Lars von Trier's
The Element of
Crime (1984)

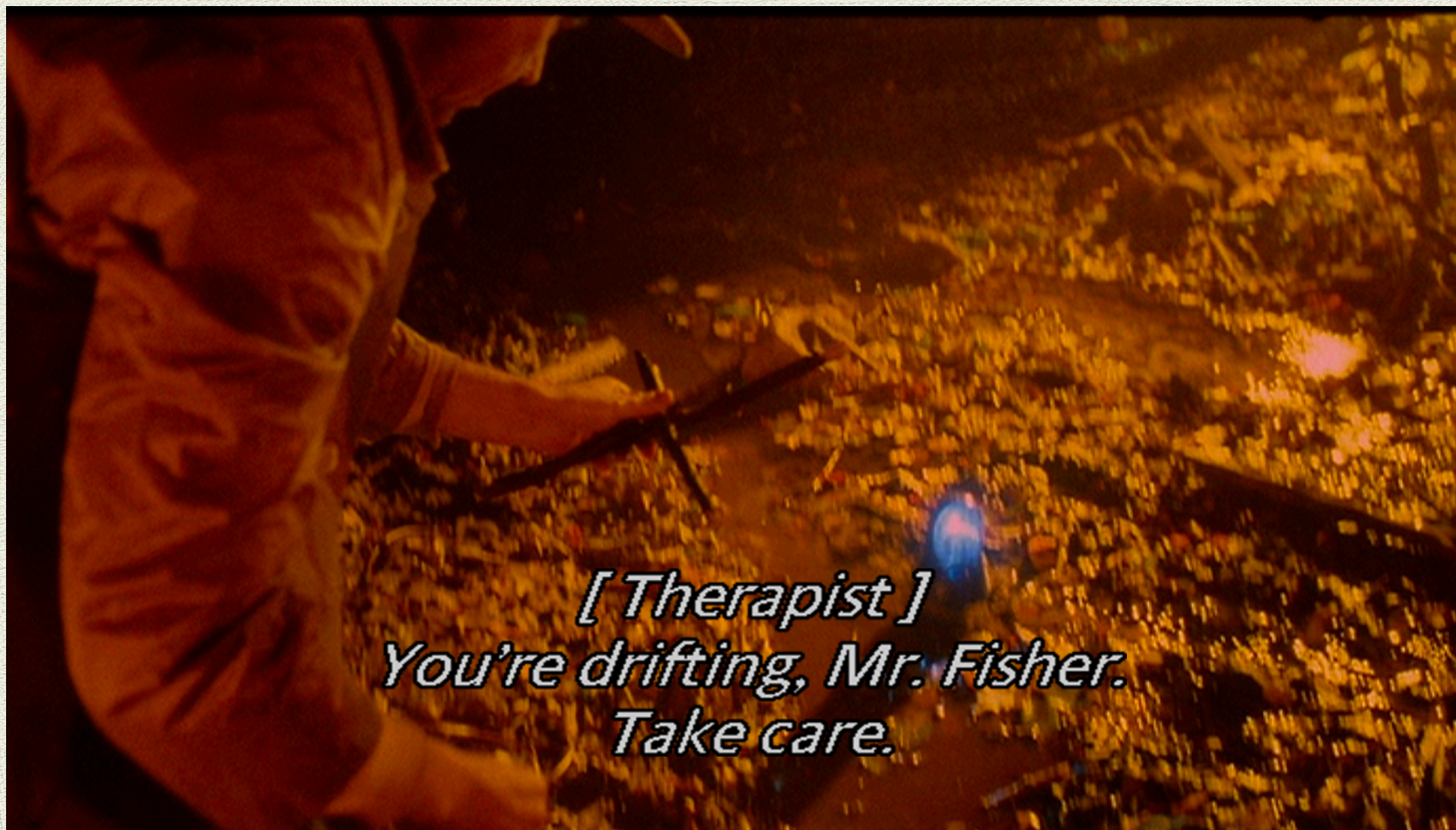
Pause

I want you to screw God into me.

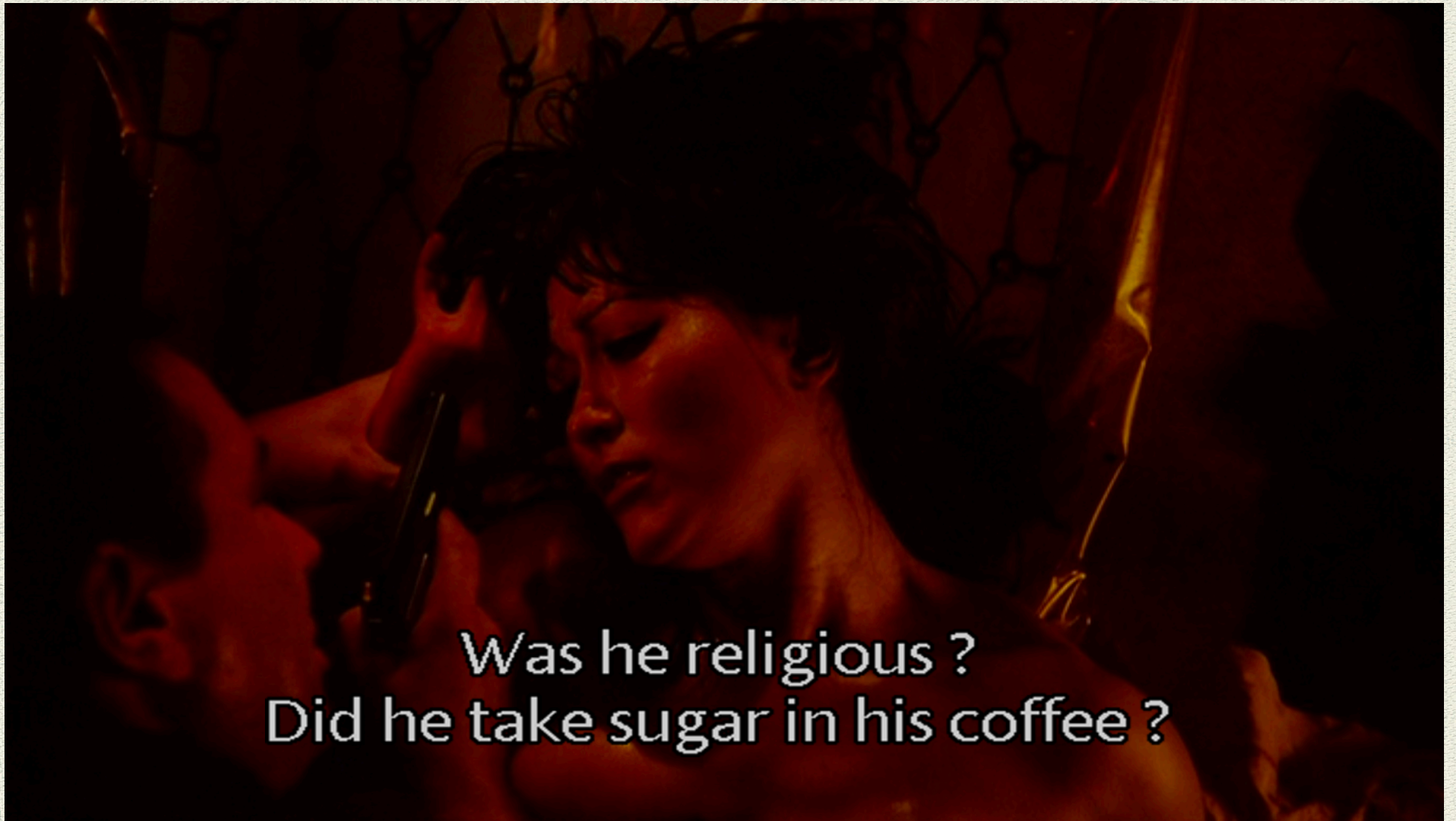
Paus



First part, the body.
Second part, the soul.



*[Therapist]
You're drifting, Mr. Fisher.
Take care.*



Was he religious ?
Did he take sugar in his coffee ?


Lars von Trier's
Medea (1988)

Pause




What was the oracle's reply?

Pause

A person wearing a dark, textured cap is seen from the back, looking towards a group of people and horses in a field. The scene is set in a grassy area with a body of water in the foreground. The background shows a line of trees under a bright sky. The overall tone is warm and slightly hazy.

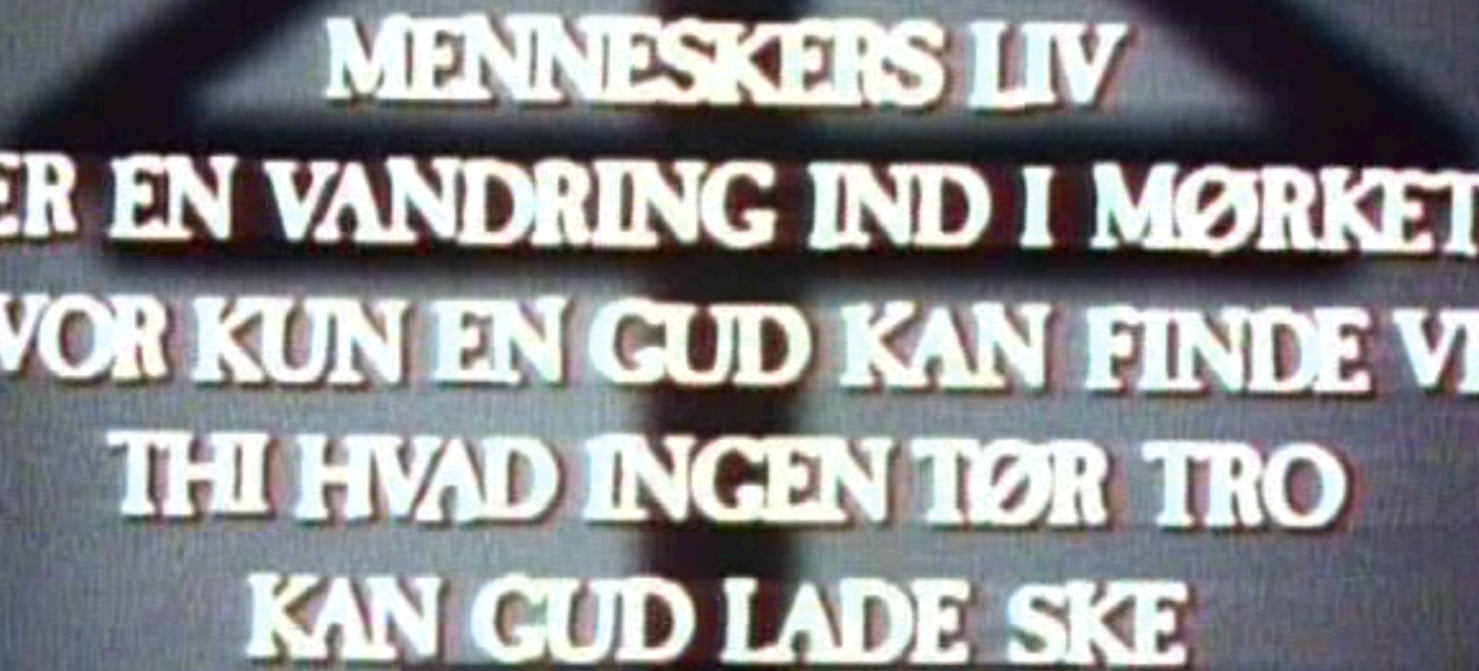
"Keep the wine in the bag
until you get home".



**MENNESKERS LIV
ER EN VANDRING IND I MØRKET
HVOR KUN EN GUD KAN FINDE VEJ
THI HVAD INGEN TØR TRO
KAN GUD LADE SKE**

A human life

is a journey into the darkness



**MENNESKERS LIV
ER EN VANDRING IND I MØRKET
HVOR KUN EN GUD KAN FINDE VEJ
THI HVAD INGEN TØR TRO
KAN GUD LADE SKE**

where only a god
can find the way

Lars von Trier's

***Europa* (1991)**



we can rely on his support if only we have faith in our cause.



Shoddy, when the Sacrament is nothing but a dry cracker.

Play



Play

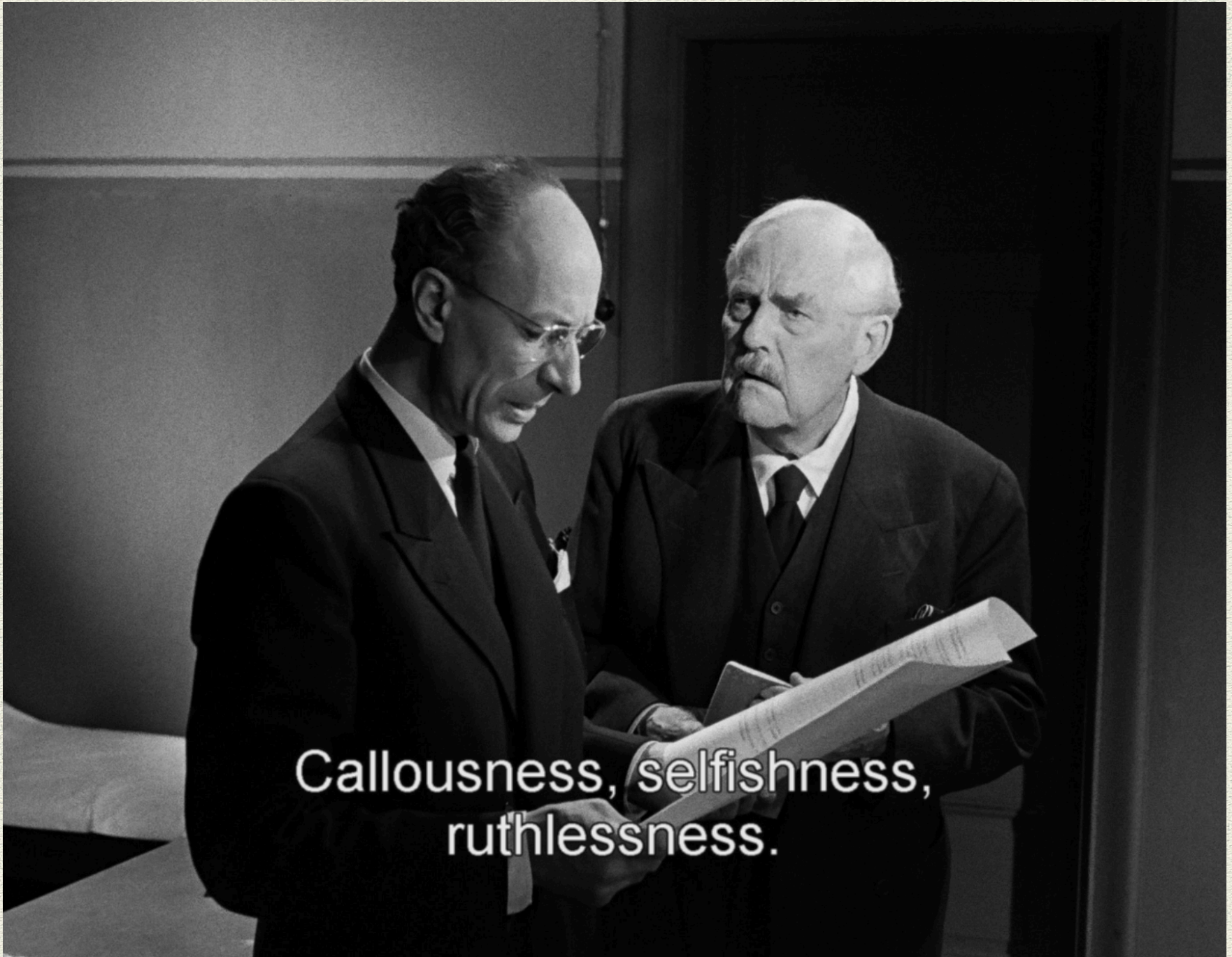


Truth & Morality

Ingmar Bergman's
Wild Strawberries
(1957)



I wouldn't hurt a fly,
let alone Miss Agda.



Callousness, selfishness,
ruthlessness.



It's absurd to live in this world,

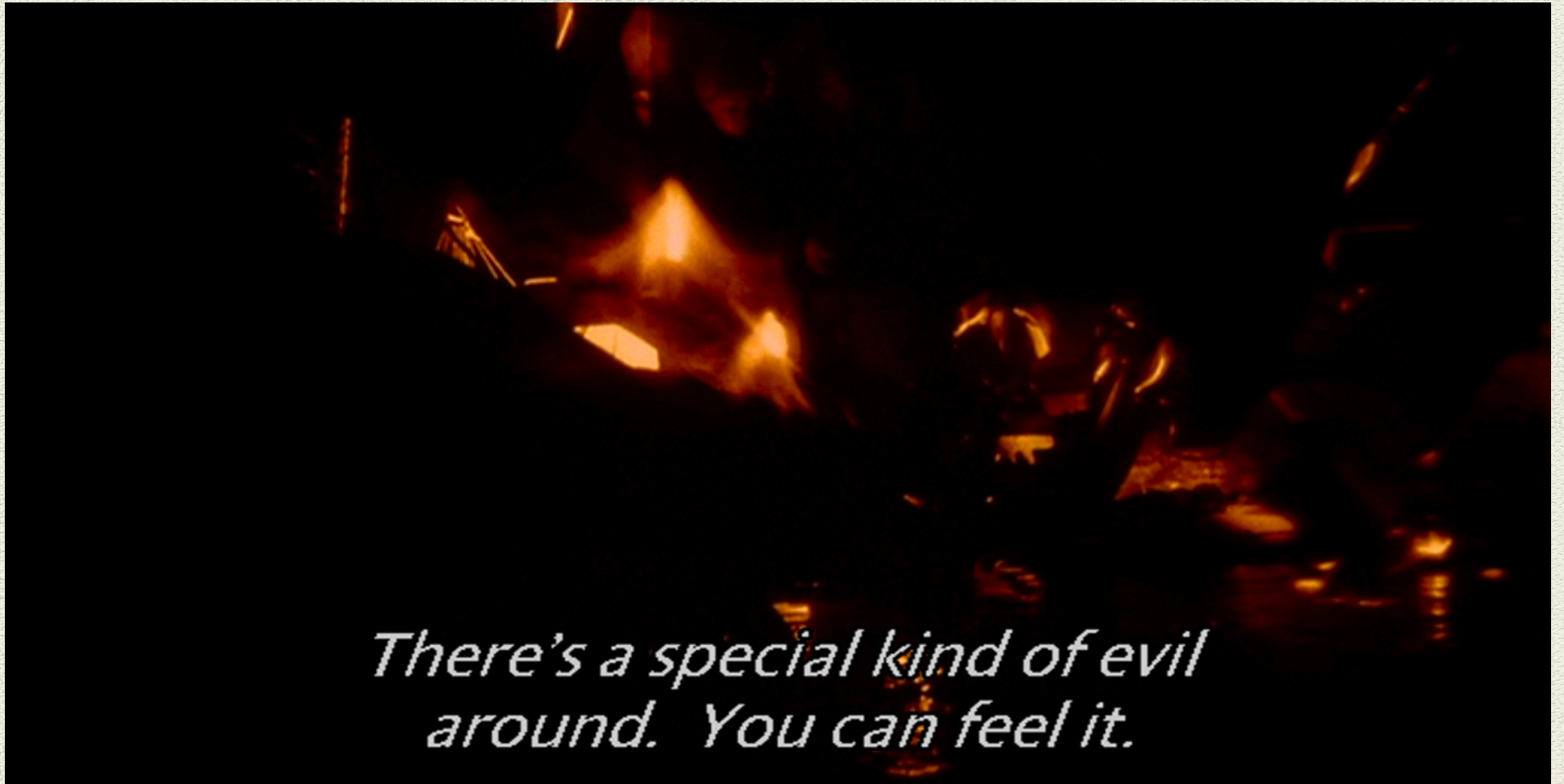


There's neither right nor wrong.

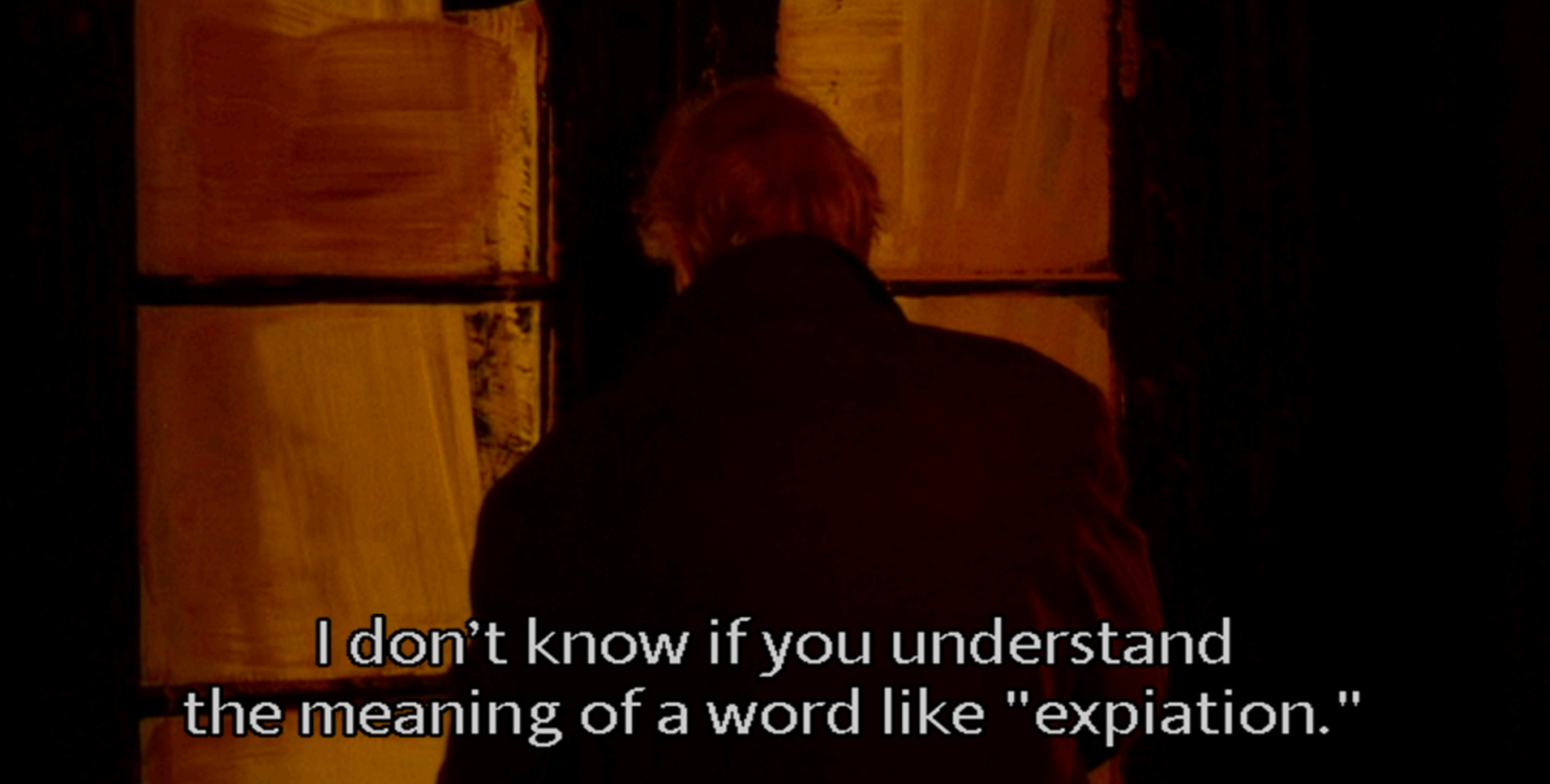
Lars von Trier's
The Element of
Crime (1984)



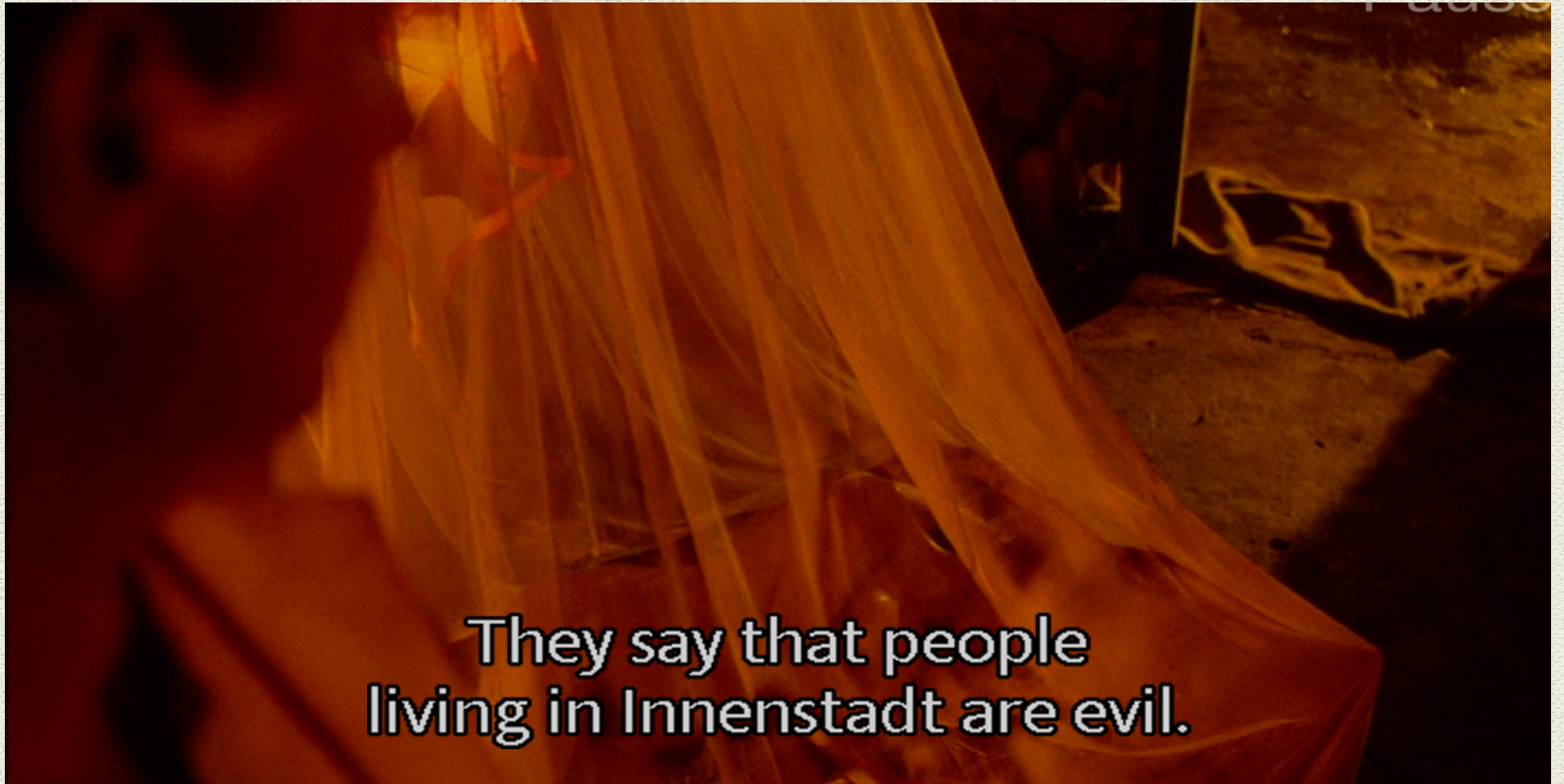
We always looked for
the element of crime in society.



*There's a special kind of evil
around. You can feel it.*

A person with long, light-colored hair is seen from behind, looking out a window. The window has white curtains that are slightly parted, revealing a dark exterior. The interior lighting is warm and dim, creating a contemplative atmosphere. The person is wearing a dark jacket or sweater.

I don't know if you understand
the meaning of a word like "expiation."



They say that people
living in Innenstadt are evil.

Lars von Trier's

***Europa* (1991)**



I don't know if we're going forwards or backwards.

Play



you must always do what you think is right.

Play

Death

Carl Dreyer's
Vampyr (1932)



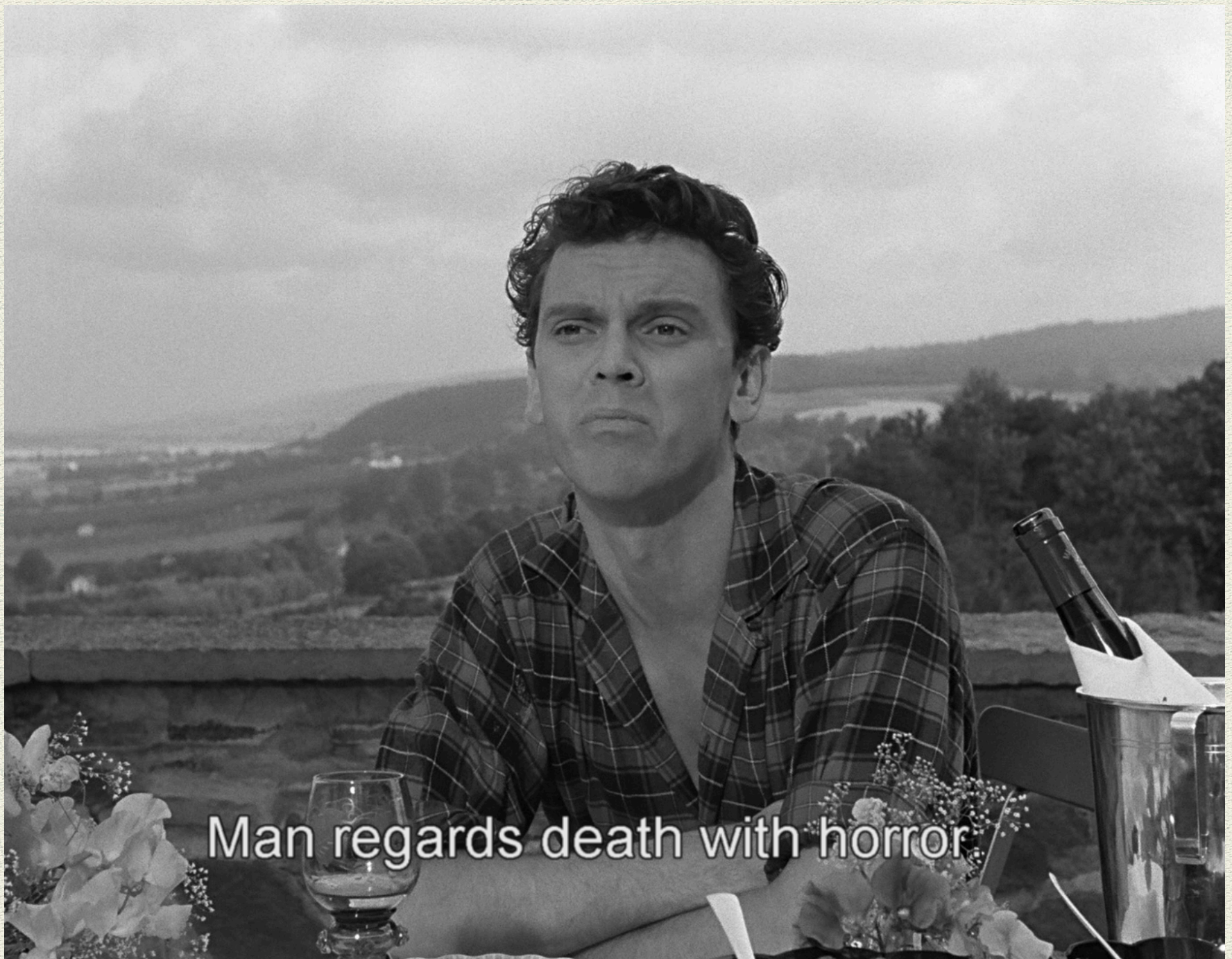






Ingmar Bergman's
Wild Strawberries
(1957)





Man regards death with horror

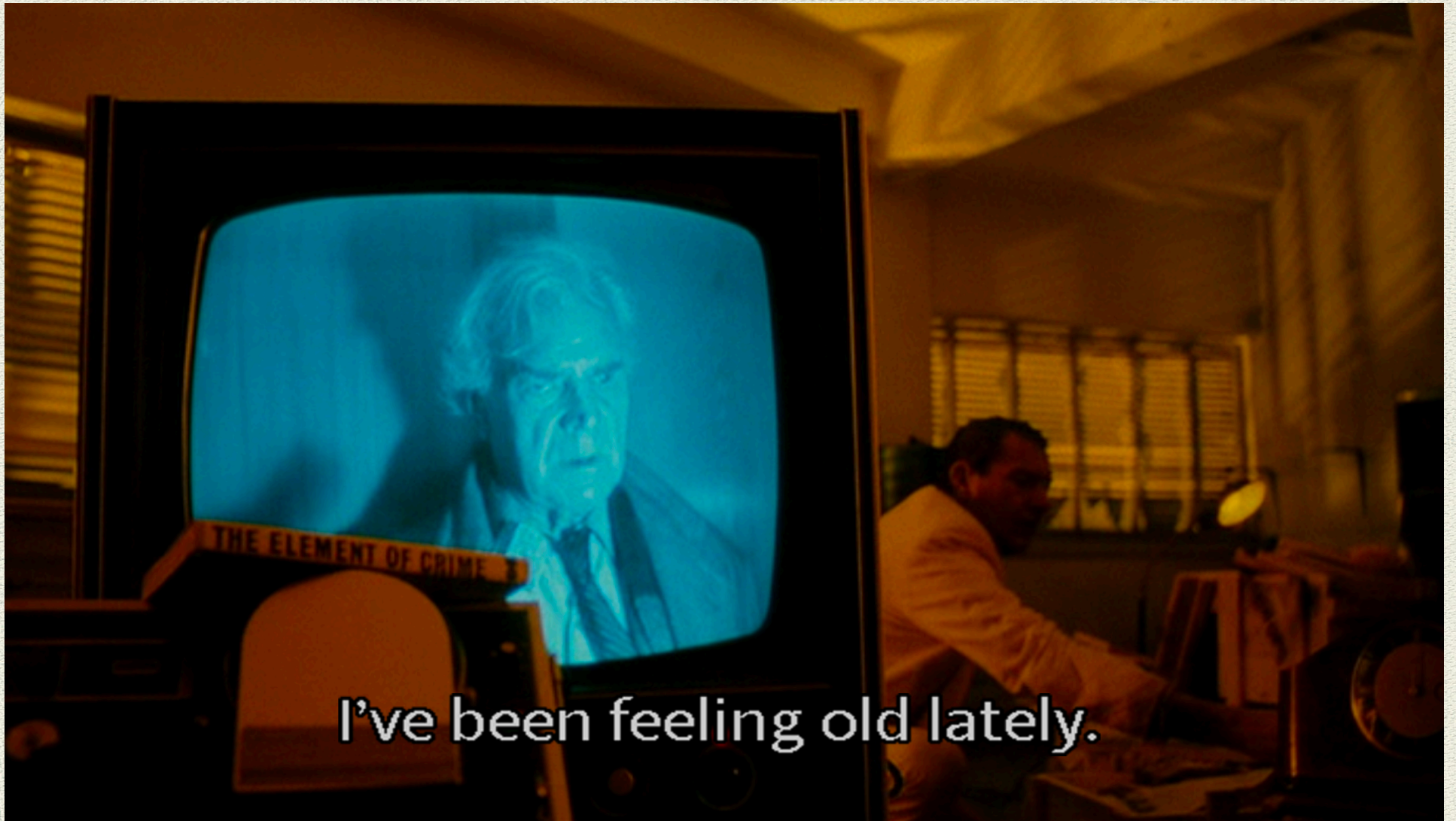


You're a worried old man
who's soon going to die,

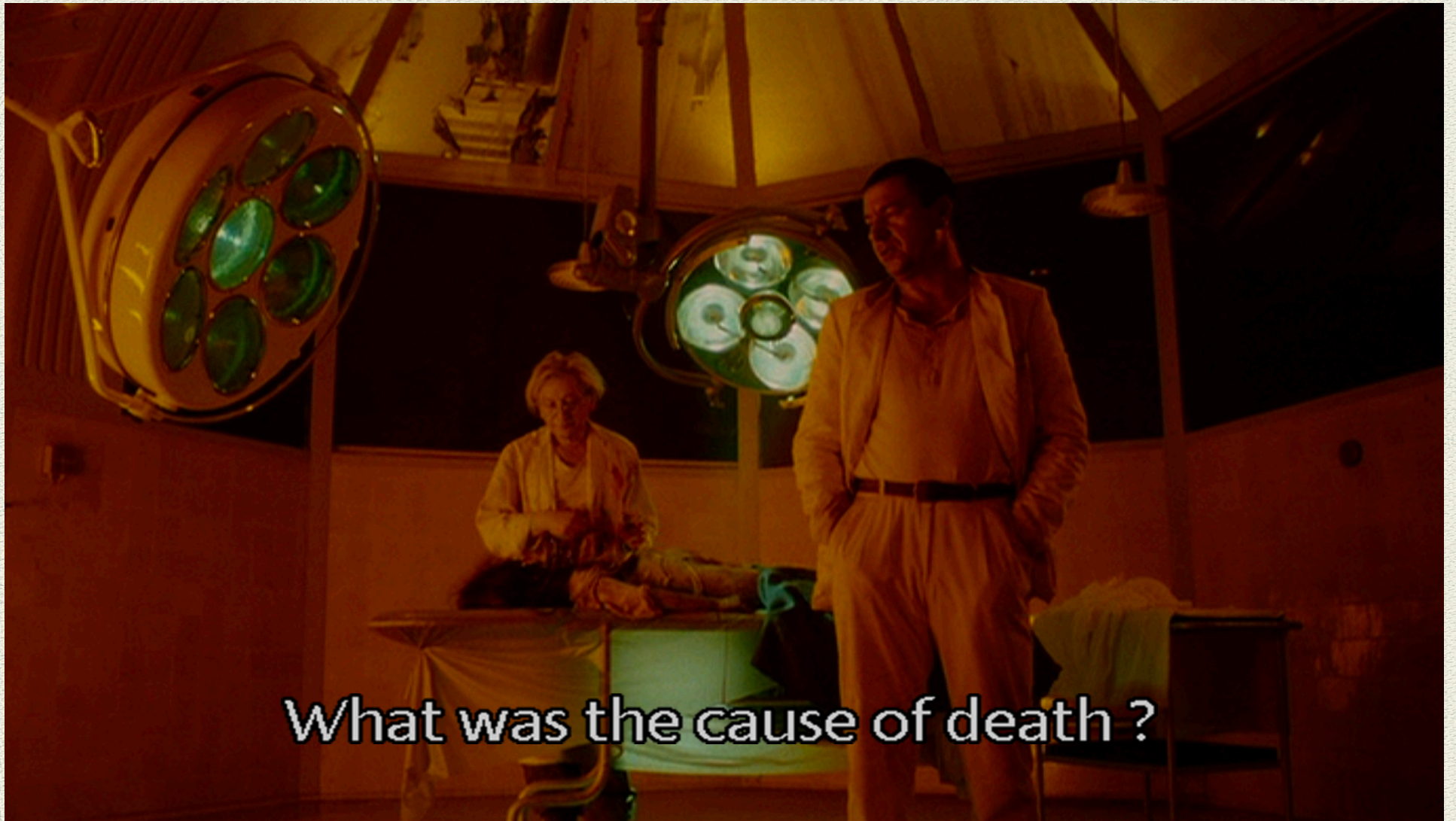


The patient is dead.

Lars von Trier's
The Element of
Crime (1984)



I've been feeling old lately.



What was the cause of death ?

Lars von Trier's
Europa (1991)





Play